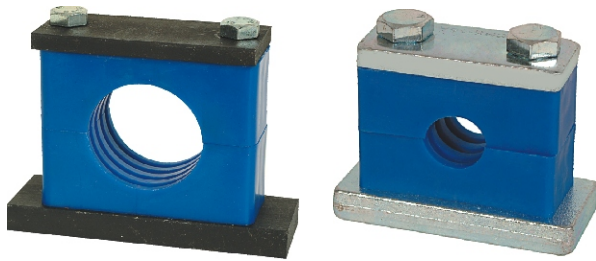




High Pressure Pipe Clamps

High Pressure Pipe Clamps / Pipe Clips



Specification	Diameter	Bore
6A	10.5mm	
8A	13.8mm Standards	PT 1/4
	12mm Special Item1	
	16mm Special Item2	
10A	17.3mm	PT 3/8
15A	21.7mm	PT 1/2
20A	27.2mm	PT 3/4
25A	34mm Standards	PT 1
	25mm Special Item1	
	30mm Special Item2	
32A	42.7mm	PT 1 1/4
40A	48.6mm	PT 1 1/2
50A	60.5mm	PT 2
65A	76.3mm	PT 2 1/2
80A	89.1mm	PT 3
100A	114.3mm	PT 4
125A	140mm	PT 5

Pipe Clips

◆ Order Code :

PZ — 1 — 1 — 04 — 07

Fixed Hole Num. | Pipe Number | Pipe Diameter | Thickness(mm)

1 : 1 fixed hole | 1 : 1 pipe | 04 : Ø4 | 07 : 0.7mm

2 : 2 fixed holes | to | to | 10 : 1.0mm

3 : 3 fixed holes | 7 : 7 pipes | 28 : Ø28 | 12 : 1.2mm

15 : 1.5mm

16 : 1.6mm

20 : 2.0mm



NO	Order Code	Fixed Hole Num.	Pipe Dia.	Pipe Num.	Thickness (mm)	Width(mm)	Length (mm)	Fixed Hole Dia.(mm)
1	PZ-110407	1	Ø4	1	0.7	10	19	5
2	PZ-120410	1	Ø4	2	1.0	10	28	5
3	PZ-130410	1	Ø4	3	1.0	10	27	5
4	PZ-140410	1	Ø4	4	1.0	10	31	5
5	PZ-150410	1	Ø4	5	1.0	10	35	5
6	PZ-110610	1	Ø6	1	1.0	10	23	5
7	PZ-120610	1	Ø6	2	1.0	10	28	5
8	PZ-160610	1	Ø6	3	1.0	12	34	5
9	PZ-110810	1	Ø8	1	1.0	10	23	5
10	PZ-120810	1	Ø8	2	1.0	12	32	5
11	PZ-111010	1	Ø10	1	1.0	10	27	5
12	PZ-111016	1	Ø10	1	1.6	12	37	7
13	PZ-111212	1	Ø12	1	1.2	12	31	5
14	PZ-111516	1	Ø15	1	1.6	20	43	7
15	PZ-110320	1	PS3/8(Ø16.67)	1	2.0	20	47	7
16	PZ-110420	1	PS1/2(Ø21)	1	2.0	20	52	7
17	PZ-112216	1	Ø22	1	1.6	20	48	7
18	PZ-110620	1	PS3/4(Ø26.44)	1	2.0	20	55	7
19	PZ-112816	1	Ø28	1	1.6	20	57	7
20	PZ-113316	1	Ø33	1	1.6	20	64	7
21	PZ-110820	1	Ps1(Ø33.2)	1	1.6	20	64	7
22	PZ-114220	1	Ø42	1	2.0	20	76	7
23	PZ-115020	1	Ø50	1	2.0	20	83	7
24	PZ-116020	1	Ø60	1	2.0	20	95	7



NO	Order Code	Fixed Hole Num.	Pipe Dia.	Pipe Num.	Thickness (mm)	Width (mm)	Length (mm)	Fixed Hole Distance (mm)	Fixed Hole Dia (mm)
25	PZ- 220415	2	Ø4	2	1.5	13	45	30	7
26	PZ- 230415	2	Ø4	3	1.5	13	47	32	7
27	PZ- 240415	2	Ø4	4	1.5	12	47	35	5
28	PZ- 250415	2	Ø4	5	1.5	13	55	38	7
29	PZ- 210615	2	Ø6	1	1.5	13	45	30	7
30	PZ- 220616	2	Ø6	2	1.6	12	46	30	7
31	PZ- 260616	2	Ø6	3	1.6	12	54	37	7
32	PZ- 240616	2	Ø6	4	1.6	12	54	40	6.5*8
33	PZ- 250616	2	Ø6	5	1.6	15	63	48	7
34	PZ- 260616	2	Ø6	6	1.6	15	68	53	7
35	PZ- 280616	2	Ø6	8	1.6	15	85	67	7*9
36	PZ- 210816	2	Ø8	1	1.6	13	45	30	7
37	PZ- 220816	2	Ø8	2	1.6	12	53	36	7
38	PZ- 230816	2	Ø8	3	1.6	12	61	44	7
39	PZ- 240816	2	Ø8	4	1.6	15	69	54	7
40	PZ- 260816	2	Ø8	6	1.6	15	80	65	7
41	PZ- 270816	2	Ø8	7	1.6	15	100	85	7
42	PZ- 211016	2	Ø10	1	1.6	13	45	30	7
43	PZ- 221016	2	Ø10	2	1.6	12	54	38	6.5*9
44	PZ- 231016	2	Ø10	3	1.6	12	66	51	7
45	PZ- 241016	2	Ø10	4	1.6	15	77	62	7*9
46	PZ- 251016	2	Ø10	5	1.6	15	87	71	7*9
47	PZ- 261016	2	Ø10	6	1.6	15	96	81	7*9
48	PZ- 271016	2	Ø10	7	1.6	15	106	91	7*9
49	PZ- 211216	2	Ø12	1	1.6	13	45	30	7
50	PZ- 221216	2	Ø12	2	1.6	10	53	39	5*7
51	PZ- 221515	2	Ø15	2	2.0	20	80	61	7*9
52	PZ- 231515	2	Ø15	3	2.0	20	96	76	7*9
53	PZ- 212216	2	Ø22	1	1.6	20	71	53	7
54	PZ- 212816	2	Ø28	1	1.6	20	74	57	7
55	PZ- 211515	2	Ø15	1	1.5	20	59	41	7



Pipe Clips

NO	Order Code	Fixed Hole Num.	Pipe Dia.	Pipe Num.	Base	Thickness (mm)	Width (mm)	Length (mm)	Fixed Hole Distance (mm)	Fixed Hole Dia (mm)
56	PZ-320415	2	Ø4	2	Upper	1.5	13	45	30	7
					Lower	3.0	13	49	30	M6xP1.0
57	PZ-330415	2	Ø4	3	Upper	1.5	13	47	32	7
					Lower	3.0	13	51	32	M5xP0.8
58	PZ-340415	2	Ø4	4	Upper	1.5	12	47	35	5
					Lower	3.0	13	50	35	M5xP0.8
59	PZ-350415	2	Ø4	5	Upper	1.5	13	55	38	7
					Lower	3.0	13	57	37	M6xP1.0
60	PZ-310615	2	Ø6	1	Upper	1.5	13	45	30	7
					Lower	3.0	13	49	30	M6xP1.0
61	PZ-320616	2	Ø6	2	Upper	1.6	12	46	30	7
					Lower	3.0	13	49	30	M6xP1.0
62	PZ-330616	2	Ø6	3	Upper	1.6	12	54	37	7
					Lower	3.0	13	57	37	M6xP1.0
63	PZ-340616	2	Ø6	4	Upper	1.6	12	54	40	6.0*8
					Lower	3.0	13	57	40	M6xP1.0
64	PZ-360616	2	Ø6	6	Upper	1.6	15	68	53	7
					Lower	3.0	16	71	53	M6xP1.0
65	PZ-380616	2	Ø6	8	Upper	1.6	15	85	67	7*9
					Lower	3.0	15	82	65	M6xP1.0
66	PZ-310816	2	Ø8	1	Upper	1.6	13	45	30	7
					Lower	3.0	13	49	30	M6xP1.0
67	PZ-320816	2	Ø8	2	Upper	1.6	12	53	36	7
					Lower	3.0	13	57	37	M6xP1.0
68	PZ-330816	2	Ø8	3	Upper	1.6	12	61	44	7
					Lower	3.0	13	64	44	M6xP1.0
69	PZ-340816	2	Ø8	4	Upper	1.6	15	69	54	7
					Lower	3.0	16	71	53	M6xP1.0
70	PZ-360816	2	Ø8	6	Upper	1.6	15	80	65	7
					Lower	3.0	15	82	65	M6xP1.0
71	PZ-36082	2	Ø8	6	Upper	1.6	15	80	65	7
					Lower	3.0	15	82	65	M6xP1.0
72	PZ-311016	2	Ø10	1	Upper	1.6	13	45	30	7
					Lower	3.0	13	49	30	M6xP1.0
73	PZ-321016	2	Ø10	2	Upper	1.6	12	54	38	6.5*9
					Lower	3.0	13	57	37	M6xP1.0
74	PZ-331016	2	Ø10	3	Upper	1.6	12	66	51	7
					Lower	3.0	13	70	51	M6xP1.0
75	PZ-341016	2	Ø10	4	Upper	1.6	15	77	62	7*9
					Lower	3.0	15	82	65	M6xP1.0
76	PZ-311216	2	Ø12	1	Upper	1.6	13	45	30	7
					Lower	3.0	13	49	49	M6xP1.0
77	PZ-321216	2	Ø12	2	Upper	1.6	10	53	39	5*7
					Lower	3.0	13	57	40	M5xP0.8